



# MACHINE LEARNING FOR PLANT DISEASE IDENTIFICATION, TRACKING AND FORECASTING FOR FARMERS

NANDIGAMA SATISH, SWATHI THAVITI, KOMMU SAMSON

Dept of CSE,

Priyadarshini Institute of Science and Technology for Women Khammam.

## ABSTRACT

Plant diseases are a major problem that threaten farmers, consumers, the environment, and the global economy. In India, field crop failure due to pathogens and pests alone costs farmers 35% of their harvest. Pesticides represent a serious threat to human health since many of them are highly toxic and can be amplified by living organisms. Avoiding these consequences is possible with proper disease detection, crop monitoring, and individualized treatment plans. Typically, agricultural experts would first seek for visible symptoms of a disease. Meanwhile, farmers have little access to experts. When it comes to automatically diagnosing, tracking, and forecasting illnesses, our effort is the first collaborative, all-encompassing platform of its kind. Farmers may use a smartphone app to rapidly and accurately diagnose diseases by taking pictures of affected plant parts. Real-time diagnosis is now possible using cutting-edge AI algorithms for cloud-based image processing. The AI model continuously refines its performance based on data from user-uploaded images and expert critiques. Farmers can also talk to local experts using the platform. Using a database of geo-tagged pictures and micro-climate variables stored in the cloud, disease density maps with projections of spread are generated for preventative measures. Using a web interface, specialists may do geographically-based illness assessments. In our research, a convolutional neural network (CNN) artificial intelligence model was trained using large disease datasets derived from images of plants collected in a decentralised fashion over the course of 7 months from a variety of farms. After using the automated CNN model to diagnose test photographs, plant pathologists validated the results and gave their stamp of approval. Over 95% accuracy was achieved in the diagnosis of illnesses. To help farmers and agricultural experts manage illnesses in a wide range of crop plants in order to sustainably harvest their crops, we have developed a novel, flexible, and easily accessible tool.

**Keywords:** CNN, Machine learning, Neural Network. Artificial Intelligence

**DOI Number:** 10.48047/nq.2020.18.12.NQ20259

**NeuroQuantology 2020; 18(12):241-246**

## INTRODUCTION

An integral component of human existence is agriculture. It is crucial to increase agricultural, fruit, and vegetable yield in emerging nations with dense populations, like India. Both the number and quality of the items provided affect the general public's health. Issues include the spread of diseases that may have been stopped with early identification hinder production and food quality. A number of these illnesses spread widely, completely eradicating agricultural

production. Human-assisted disease detection is ineffective and unable to meet the enormous demand due to the dispersed nature of agricultural areas, the low educational levels of farmers, the shortage of relevant knowledge, and the difficulty in acquiring access to plant pathologists. It is necessary to automate crop disease diagnosis with technology and introduce low-cost, accurate machine-aided diagnostics that are readily available to farmers in order to



address the shortcomings of human helped disease detection. Robotics and computer vision technologies have developed to the point where they may be applied to address a variety of issues facing the agriculture sector. The application of image processing may be advantageous for precision agriculture techniques, weed and pesticide technology, monitoring plant development, and nutrient control [1][2]. Although many plant diseases can be identified by plant pathologists through visual inspection of physical symptoms like detectable colour change, wilting, the appearance of spots and lesions, etc., in addition to soil and climatic conditions, progress on automating plant disease diagnosis is still in its infancy. On the overall, commercial investments in agricultural technology integration are still less significant than those made in more lucrative industries like human health and education. Due to obstacles like access and links for farmers to plant pathologists, significant implementation costs, and scalability of solutions, promising research ideas have not been able to materialise. Recent advances in mobile, cloud, and artificial intelligence (AI) technologies provide a scalable, affordable solution that might be widely used to fight agricultural diseases. Mobile devices with internet capabilities are used far more often in nations with poorer standards of living, such as India. Geolocated photographs may be readily shared by individuals utilising widely accessible, affordable mobile phones. They may interact with more advanced Cloud-based backend services that handle computationally challenging operations, centralise data storage, and perform data analytics over open mobile networks. The ability of the human eye to recognise and categorise images properly has recently been surpassed by artificial intelligence (AI) based image analysis. Neural networks (NN) with a connection structure based on the visual cortex are used in the underlying AI algorithms. To achieve high accuracy in image classification on new, unseen images, these networks are "trained" using a huge volume of previously categorised, "labelled,"

photographs. Deep convolutional neural networks (CNNs) have taken over the field of computer vision and image processing since "AlexNet" won the ImageNet competition in 2012 [3]. The development of NN algorithms, the rise in processing power, and the availability of big data sets are all thought to be responsible for the breakthrough in CNN capabilities. Open source platforms like TensorFlow have made it feasible to develop improved AI that is more inexpensive and accessible [4].

#### **SYSTEM ANALYSIS**

##### **EXISTING SYSTEM:**

In India, pathogens and pests are responsible for the failure of 35% of field crops, resulting in financial losses for farmers. Pesticides represent a serious threat to human health since many of them are highly toxic and can be amplified by living organisms. Avoiding these consequences is possible with proper disease detection, crop monitoring, and individualised treatment plans. Typically, agricultural experts would first seek for visible symptoms of a disease. Meanwhile, farmers have little access to experts[5].

##### **DISADVANTAGE:**

Pesticides pose a serious threat to human health since many of them are highly toxic and can have a multiplied effect when used carelessly [6].

##### **PROPOSED SYSTEM:**

In this study, we use all of the plant disease photos to train a convolution neural network (CNN), which then detects the presence of plant diseases in newly submitted images. The CNN train model and accompanying photographs are stored in the author's cloud account. Thus, information on plant diseases is predicted by the author and kept in the cloud[7].

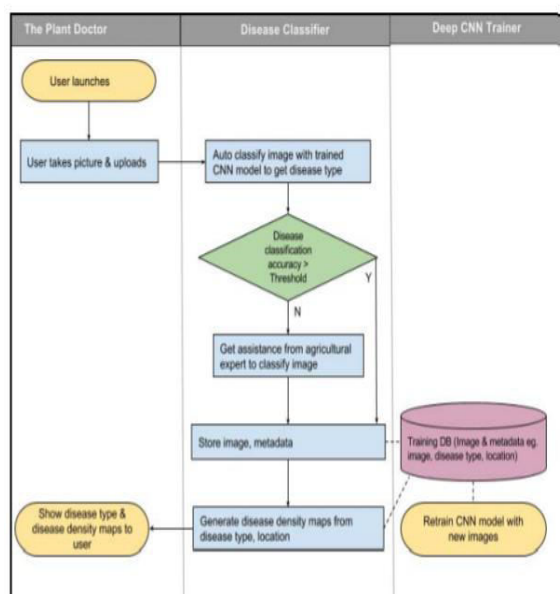
To submit photographs, we use a smart phone, but developing an Android app would be too costly and time-consuming for our project, so instead we developed a Python online app. This online tool is used to train a convolutional neural network (CNN), which is then used to analyse uploaded photos for disease prediction[8].

##### **ADVANTAGES OF PROPOSED SYSTEM:**

Use a smartphone app to take images of diseased plant parts for a precise diagnosis.

## SYSTEM DESIGN

### SYSTEM ARCHITECTURE DIAGRAM:



**Fig 1: Machine Learning Techniques for Disease Identification:**

Discussion of various machine learning algorithms used for plant disease identification

Mention of image recognition techniques, including convolutional neural networks (CNNs), and their role in analyzing leaf images for disease symptoms.

Case studies and examples of successful disease identification systems[2].

#### Tracking and Monitoring Plant Diseases:

Explanation of how machine learning can be used to track and monitor the spread of diseases.

Utilization of sensor data, satellite imagery, and IOT devices for real-time disease tracking  
 Illustration of how data-driven insights can aid in early disease detection and control[3].

#### Forecasting Disease Outbreaks:

Elaboration on the predictive capabilities of machine learning models in forecasting disease outbreaks[4].

Discussing the integration of historical data, weather patterns, and environmental factors to predict disease occurrences  
 Importance of accurate forecasting in enabling farmers to implement preventive measures[5].

#### Challenges and Considerations:

- Addressing challenges such as data quality, model robustness, and interpretability.

- Ethical considerations in data collection and sharing, especially when involving farmers' data
- Discussion on the digital divide and ensuring accessibility to technology in different agricultural regions

#### Benefits and Impact:

- Outlining the potential benefits of implementing machine learning in disease management
- Improved crop yield, reduced pesticide usage, and minimized economic losses.
- Positive ecological impact through targeted treatments

#### Case Studies and Applications:

Highlighting real-world applications and success stories from different regions

Examples of collaborations between researchers, farmers, and technology developers

Demonstrating the scalability and adaptability of machine learning solutions

#### Future Directions:

- Speculating on the future developments in this field
- Advancements in AI and data collection techniques
- Integration of other technologies such as blockchain and edge computing

**ALGORITHM MODEL**

Many studies have discussed utilising transfer learning to identify common CNN models for plant disease diagnosis, and they have found extremely high classification accuracy. However, these untrained models need a lot of storage space and laborious training since they have a significant number of nodes in the flattening layers and convolution layers. This chapter aims to demonstrate that even with simple CNN models, extremely

high classification accuracies may be achieved[8]. The method has been demonstrated through the categorization of diseases in tomato and grape crops. The outcomes have also been contrasted with what can be learned using conventional machine learning techniques. The plant village dataset that is utilised for case studies is described after the chapter first explains the light versions of CNN models. Then, using the light versions, tests on tomato and grape crops are conducted[9].

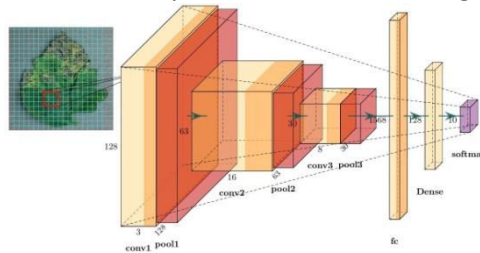
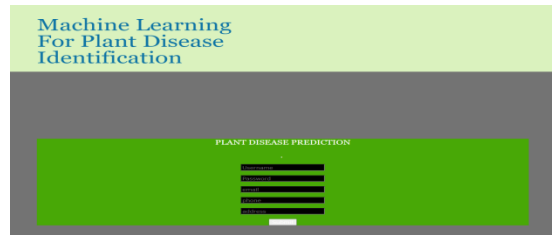


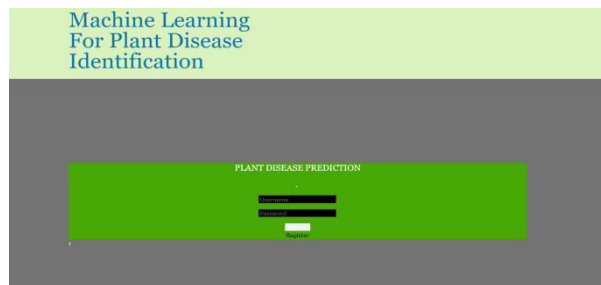
Fig 2: CNN model

**RESULTS**

Register page:



Login page:



Main page:



Cotton crop disease:



Layer (type)	Output Shape	Param #
conv2d_1 (Conv2D)	(None, 126, 126, 32)	896
max_pooling2d_1 (MaxPooling2)	(None, 63, 63, 32)	0
conv2d_2 (Conv2D)	(None, 61, 61, 32)	9248
max_pooling2d_2 (MaxPooling2)	(None, 30, 30, 32)	0
flatten_1 (Flatten)	(None, 28800)	0
dense_1 (Dense)	(None, 256)	7373056
dense_2 (Dense)	(None, 5)	1285
Total params: 7,384,485		
Trainable params: 7,384,485		
Non-trainable params: 0		

**CONCLUSION**

Farmers have a significant challenge in the accurate, quick, and early identification of crop diseases and knowledge of disease outbreaks. Our initiative offers a simple, end-to-end, low-cost solution to this issue. Farmers would therefore be in a better position to choose the best ways to stop the spread of disease. By using deep Convolutional Neural Networks (CNNs) for disease classification, introducing a social collaborative platform to steadily improve accuracy, using geocoded images for disease density maps, and using an expert interface for analytics, this proposal improves upon previous work. Through a user-facing mobile app, the potent deep CNN model "Inception" offers real-time illness categorization in the Cloud. By automatically growing the cloud-based training dataset with user-added images for retraining the CNN network, the collaborative approach enables ongoing improvement in the accuracy of illness categorization. Based on the availability of geolocation data within the images and aggregate sickness categorization data, user-

uploaded photos in the Cloud repository enable the creation of disease density maps. Overall, our experimental findings indicate that the proposal has a significant potential for practical implementation due to a number of factors, including the highly scalable Cloud-based infrastructure, the underlying algorithm's accuracy even with a large number of disease categories, the proposal's improved performance with high-fidelity real-world training data, the proposal's improved accuracy with increase in the training dataset, and the proposal's capability to detect multiple diseases simultaneously.

**Future work:**

More research is required in the area of extending the model to incorporate additional factors that might reinforce the link between the sickness and the variable. To increase the precision of our model and allow disease predictions, we may add to the picture database additional information from the farmer on the soil, prior fertiliser and pesticide treatment, and publically accessible weather factors like temperature, humidity, and rainfall. Our goals also include a decrease



in professional intervention as a whole and an increase in the number of agricultural illnesses that are covered. It may be feasible to automatically accept user-uploaded photos into the Training Database for increased classification accuracy with minimal human involvement utilising a simple method of setting the threshold based on the average of all classification results. The results of this work might be used to construct time-based automated monitoring of illness density maps, which would allow for the prompt issuance of alerts and the tracking of disease outbreaks. Users may receive notifications about potential illness outbreaks in their area by using predictive analytics.

#### REFERENCES

- [1] L. Saxena and L. Armstrong, "A survey of image processing techniques for agriculture," Asian Federation for Information Technology in Agriculture, Proceedings, 2014, pp. 401-413.
- [2] "Measuring quantitative virulence in the wheat pathogen *Zymoseptoria tritici* using high-throughput automated image analysis," *Phytopathology* 104, no. 9, 2014, pp. 985–992.
- [3] "Imagenet classification with deep convolutional neural networks," *Advances in Neural Information Processing Systems*, 2012; A. Krizhevsky, I. Sutskever, and G. E. Hinton. TensorFlow
- [4]. You may find it at <https://www.tensorflow.org>
- [5] D. P. Hughes, M. Salathé, and others. "An open access repository of images on plant health to enable the development of mobile disease diagnostics through machine learning and crowdsourcing," *CoRR abs/1511.08060*, 2015.
- [6] "Automatic detection of diseased tomato plants using thermal and stereo visible light images," *PLoS ONE*, S. Raza, G. Prince, J. P. Clarkson, and N. M. Rajpoot, 2015.
- [7] "Integrating soms and a bayesian classifier for segmenting diseased plants in uncontrolled environments," D. L. Hernández-Rabadán, F. Ramos-Quintana, and J. Guerrero Juk published in the *Scientific World Journal* in 2014.
- [8] "Visible-near infrared spectroscopy for detection of huanglongbing in citrus orchards," in *Computers and Electronics in Agriculture* 77, 2011, pp. 127–134. S. Sankaran, A. Mishra, J. M. Maja, and R. Ehsani.
- [9] "A comparative study on application of computer vision and fluorescence imaging spectroscopy for detection of huanglongbing citrus disease in the USA and Brazil," *Journal of Spectroscopy*, 2013. C. B. Wetterich, R. Kumar, S. Sankaran, J. B. Junior, R. Ehsani, and L. G. Marcassa.
- [10] "Rethinking the inception architecture for computer vision," by C. Szegedy, *Proceedings of the IEEE Conference on Computer Vision and Pattern Recognition*, 2016, pp. 2818–2826.